

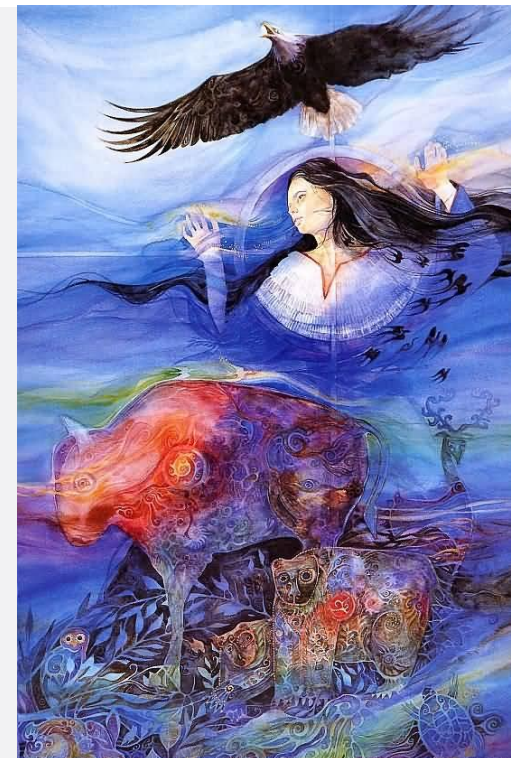
Envision a World without Violence

Telling Our Story, Creating Sister Space



Tel (866) 599-9650
www.red-wind.net

Victoria Ybanez
ybanez@red-ind.net



NIJ Report Details High Levels of Violence Experienced by Native Communities

NATIVE COMMUNITIES BEAR HIGH BURDENS OF VIOLENCE OF ALL TYPES

- 56.1 percent have experienced sexual violence.
- 55.5 percent have experienced physical violence by an in mate partner.
- 48.8 percent have experienced stalking.
- 66.4 percent have experienced psychological aggression by an in mate partner.

Envision a World without Violence



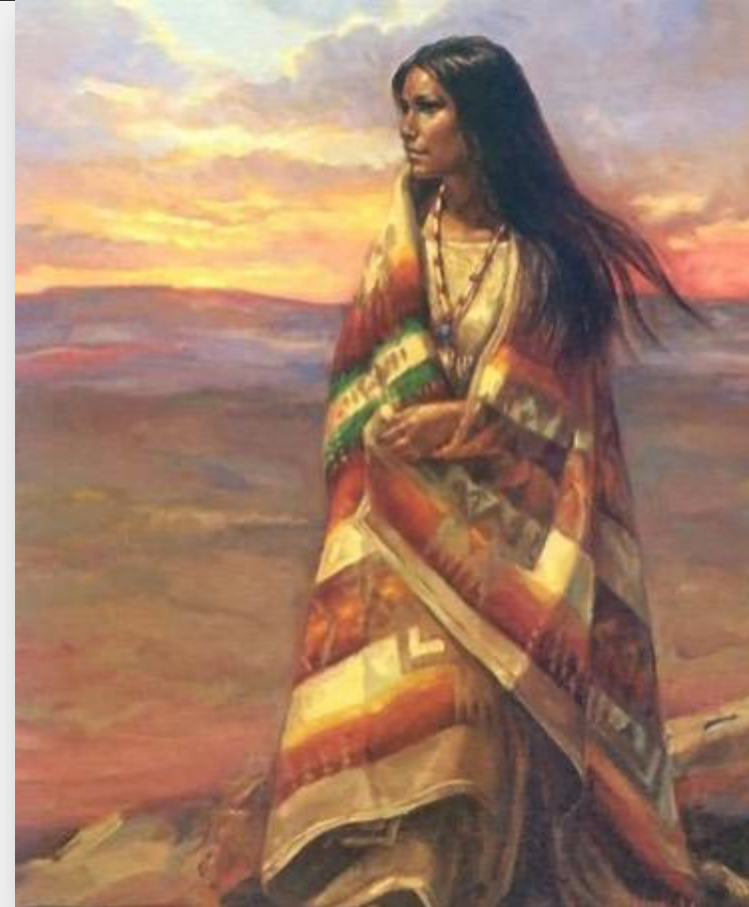
Women surviving

Every day, women survive physical or sexual violence. Some survive as a result of services they receive in the after-math of the abuse.

(Postmus, Severson, Berry, & Yoo, 2009)

Survivors' Needs

- Time to get on their feet
- A time and space to make decisions, explore options with privacy and respect
- An environment that supports individual decision making



Social Change Advocacy v. Case Management Comparison

ADVOCACY

- Individuals are their own experts
- Works to give voice to the victim/survivor experience
Accountable to victim/survivors
- Relationship mutually determined
- Balances all aspects of self
- Focused on personal sovereignty and power/control issues of systems and society
- Seeks connections/interrelated issues – inclusiveness
- Re-evaluates beliefs/critical thinking

CASE MANAGEMENT

- Lack of personal control over information
- Practitioner shared review of “case”
- May be punitive
- Limited self-disclosure/"emoting"
- Illness/problem focus/"sick role"
- Limited relationship/referral
- Fragmented, compartmentalized, single issues
- Depersonalized
- Focus is on the bureaucracy
- Burden of proof on individual

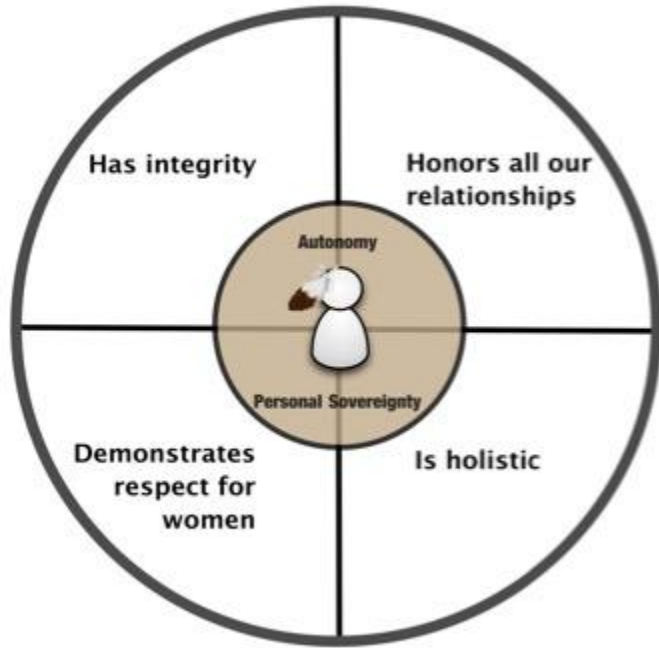
Envision a World without Violence

Remember that you are all people and that all people are you. Remember that you are this universe and that this universe is you. Remember that all is in motion, is growing, is you. Remember that language comes from this. Remember the dance that language is, that life is.

Remember. ~ Joy Harjo
(Dehle, 2009)



Envision a World without Violence



Values	Actions
Honors all our relationships	<i>Will recognize the interconnected relationships victims/survivors have. Will make sure families as identified by the victim/survivor will be recognized and supported</i>
Is holistic	<i>Will work to address the complex needs a victim/survivor has. This will include the journey of personal healing toward reaching living their lives as they desire</i>
Demonstrates respect for women	<i>Every level of the program will demonstrate respect by the rules, policies and practices that are put in place, the actions of staff, and the environment created that respects a woman's ability to make decisions and guide the direction of their own lives</i>
Has integrity	<i>Rules, expectations, program supports that are offered will be clearly communicated and will be demonstrated in the actions of program delivery provided by staff</i>

Window of opportunity

- Build a space to support women on their journeys
- Determine the tone and nature of our work
- The rules and polices put in place are guided by what we are trying to accomplish/create, by the funding sources we use, tribal and/or local laws and our guiding beliefs.
 - ❑ Are we creating an environment that helps to embrace a woman?
 - ❑ Are we creating a place where we work to manage a woman?

“...the main thing [is] to look at everything we do, and everything we expect of our clients, and see how that measures up.” (Tauffest)



Working in Sister Space



- Has an ability to recognize how what they are doing will have an impact on women's lives
- Able to put themselves into the lives of the women whom they are working with
- Able to offer a supportive, compassionate and patient process
- Assists a victim/survivor to explore their options while balancing their survival skills

Envision a World without Violence

I love to go home

“Our home may be modest, we may not have the best designer furniture, but when you come into our home you feel like [you are] a part of the family, you feel alive, you feel the people’s strength.”

(Looking Horse, 1995)



Envision a World without Violence



Victoria Ybanez, Executive Director
ybanez@red-wind.net

866-599-9650

www.red-wind.net

<https://www.facebook.com/RedWindConsulting>

